

Popular varieties of *Christmas trees*

Colorado Spruce

This spruce has sharp blue or green needles about three quarters of an inch in length. Its stiff branches and good needle retention make it a desirable Christmas tree with its excellent form and outstanding color. This tree can tolerate heavy ornaments.

Concolor Fir

This attractive tree has long, thick, blue-green needles. It is a very long-lasting tree with stiff branches. It's very easy to decorate, and has a great citrus aroma.

Canaan Fir

The Canaan Fir is very long lasting and easy to decorate. It is blue green in color, soft to the touch and similar to the Fraser Fir.

Douglas Fir

Because of its fragrant, soft, short needles, this tree is a holiday favorite. Its sturdy branches and good needle retention make this evergreen very long lasting. It's often called the "perfect tree," very easy to decorate, and will tolerate medium to heavy ornaments.

Fraser Fir

One of the most popular trees, this fir has soft short blue-green needles with silvery undersides. Its bottle-brush texture, stiff branching and outstanding needle retention make it a superb Christmas tree.

Norway Spruce

This tree has short, rich, dark green needles, and stiff branches. However, it does not hold up well indoors for long periods, but does tolerate heavier ornaments.

Scotch Pine

This conifer has been a popular Christmas tree for many years. Its sharp blue-green foliage with needles about two to three inches in length can be sheared to an appealing shape. Its strong branches hold ornaments well and it has excellent needle retention.

White Pine

White Pine is native to Indiana County, and has soft, long needles. A very graceful looking evergreen, its fragrance and excellent needle retention make it a popular Christmas tree. The branches are thinner so it will only tolerate lighter-weight ornaments.

White Spruce

This tree's compact, blue-green foliage with needles about one-half inch in length is very appealing. Given proper care, this tree also exhibits good needle retention. Its excellent color and form make it an exceptional Christmas tree.

Why a *Real Tree*?



- ♦ Real trees clean air and produce oxygen
- ♦ One acre of Christmas trees produces enough air for 18 people per day
- ♦ Real trees provide a natural habitat for birds and animals
- ♦ Fake trees carry the potential for lead poisoning in the coloring used, and pollute when recycled
- ♦ Real trees keep our water clean, our soil stable and our countryside more aesthetically pleasing
- ♦ When recycled, real trees make excellent garden mulch as well as bird feeders
- ♦ Recycled trees are also used in lakes to add structure for fish and to help curb beach erosion
- ♦ In landfills, fake trees leech toxins into our groundwater. These poisons include dioxin, PVC's and lead
- ♦ Real trees do not require a warning label, fake trees do

- Indiana County Holiday Packages, including a Christmas Tree are available.
- For a complete calendar of Indiana County Events and Lodging, visit our website.



How We Became

The Christmas Tree Capital of the World

Growing Christmas Trees, as a farm crop in Indiana County, started in 1918. In 1956 an estimated 700,000 trees in Indiana County were cut. Some time during this period, Indiana County began to be touted as the "Christmas Tree Capital of the World", according to an Associated Press Dispatch. About 1958 Shelton, Washington laid claim to the Christmas Tree Capital title but was repulsed when Walter Schroth, one of Indiana County's nurserymen, revealed he had an order for 15,000 trees to be shipped to Tacoma, Washington. Other states may produce more now, but we were the first. A newspaper reporter doing a story on the other capitals, reported we were the only ones with the signs up along the road that say, "Indiana County Christmas Tree Capital of the World."



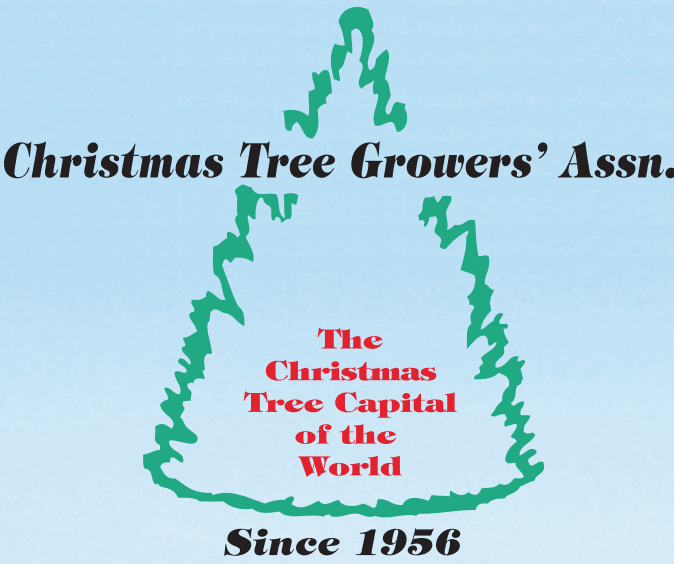
www.christmastreecapital.com

TREE CARE

When you take me home Please:

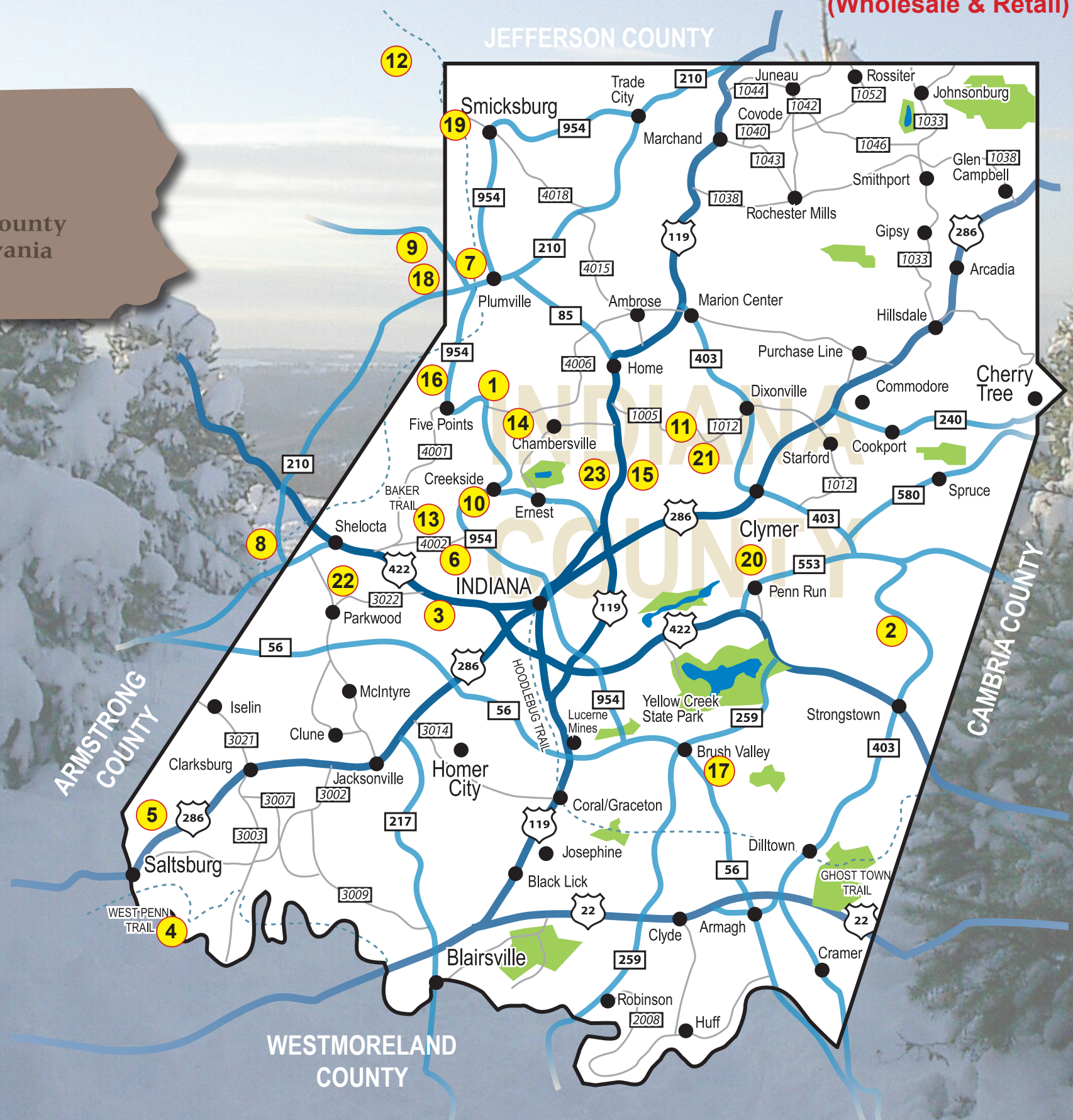
1. Store me in a cool place until ready to decorate me
 2. Make sure my stand is the correct size and holds at least 1 gallon of water
 3. A THIN fresh cut will help me drink water
 4. Give me plenty of water as soon as possible
 5. Keep me away from heat
 6. **Check my water level every day!**
 7. Carefully check light strings for signs of wear before using them to decorate me.
- HINT: Miniature lights won't dry me out like big lights
8. Never leave my lights on when you leave the house or go to bed
 9. Don't burn me in your fireplace or wood stove
 10. Recycle me after Christmas

INDIANA COUNTY
Pennsylvania



www.christmastreecapital.com

Locations to purchase *Christmas Trees* in Indiana County



Indiana County Christmas Tree Growers' Association

■ - Wholesale ♦ - Retail ● - Choose & Cut

- 1 Bob's Tree Service ■**
Jesse & Jarrett Buchleitner
 93 Redding Rd., Creekside, PA, 15732
 P: 724-397-2885
 - 2 Carino Nurseries ■**
Laura Carino
 Mailing: P.O. Box 538, Indiana, PA, 15701
 Physical: 857 Cameron Bottom Rd., Penn Run, PA 15765
 P: 800-223-7075 F: 724-463-3050
 E: info@carinonurseries.com
 W: www.carinonurseries.com
 - 3 Chapman Tree Farm ■ ♦**
Edward Chapman
 2882 422 West, Indiana, PA, 15701
 P: 724-349-2789 or 724-465-8848
 E: alys014@hotmail.com
 - 4 Claybrooke Tree Farm ■**
Edward Stewart
 301 Moween Rd., Saltsburg, PA, 15681
 P: 724-454-0614
 - 5 E-Mar Acres Tree Farm ■ ♦ ●**
Ron & Margie Mancabelli
 1429 Nowrytown Rd., Saltsburg, PA, 15681
 H: 724-639-3823 C: 724-244-7003
 E: ronmancabelli@hotmail.com
 - 6 Fleming's Christmas Tree Farms ■ ♦ ●**
J.D. & Randy Fleming
 1803 Fleming Rd., Indiana, PA, 15701
 P: 724-463-0570 F: 724-463-9233
 E: hoho@flemingschristmastrees.com
 W: www.FlemingsChristmasTrees.com
 - 7 Flickinger's Nursery ■**
Thomas R. Flickinger
 Rt. 85, Beyer, PA, 16211
 P: 800-368-7381
 E: flicknursery@gmail.com
 W: www.flicknursery.com
 - 8 Glenn Fleming Landscaping ■ ♦ ●**
James G. Fleming and Brad Fleming
 Mailing: P.O. Box 88, Elderton, PA, 15736
 Physical: 160 Pine Branch Hollow Rd., Shelocta, PA, 15774
 P: 724-354-3241
 E: mausiefleming@comcast.net
 W: www.glennfleminglandscaping.com
 - 9 Goldstrohm Tree Farm ■**
Samuel R. Goldstrohm
 148 Hilty Rd., Dayton, PA, 16222
 P: 724-783-7797
 E: srgold88@hotmail.com
 - 10 Gregg Van Horn's Tree Farm ♦ ●**
 5601 Highway 954 North, Creekside, PA, 15732
 P: 724-397-8502
 - 11 H. R. Rental Co. ■**
Ross J. Bricklemeyer
 Wadas Rd., Indiana, PA, 15701
 P: 724-349-5880 C: 724-541-0150
 E: ross.bricklemeyer@comcast.net
 - 12 Howard Neal ■**
 Box 204, Timblin, PA, 15778
 P: 814-256-3766
 - 13 Jim Reed ■**
 318 Dark Hollow Rd., Indiana, PA, 15701
 P: 724-354-2207
 - 14 Johnston's Nursery ■ ♦ ●**
Dave Johnston
 9272 Chambersville Rd., Creekside, PA, 15732
 P: 724-463-8456 F: 724-465-5833
 E: seedlings@hotmail.com
 - 15 Musser Forests, Inc. ■ ♦**
 1880 Rt. 119 Hwy N, Indiana, PA, 15701
 P: 724-465-5685
 E: info@musserforests.com
 W: www.musserforests.com
 - 16 Myers Nursery ■**
Ivan L. & Norma Jean Myers
 496 Atwood Rd., Creekside, PA, 15732
 P: 724-397-2278
 - 17 Mytrysak Nursery ■ ♦ ●**
Den & Sophie Mytrysak
 5700 Rt. 56 East, Homer City, PA 15748
 If using GPS: 287 Valley View Rd., Brush Valley, PA, 15720
 C: 724-599-4940
 E: myden@verizon.net
 - 18 Paul D. Orr Sons ■**
Gary & Mark Orr
 2101 St. Route 210, Rural Valley, PA, 16249
 P: 724-354-3821 or 724-349-2389
 - 19 Peter Catanese ■**
 2066 Fifth St., P.O. Box 49, Sagamore, PA, 16250
 P: 724-783-7369
 - 20 Strong Nursery ■**
Ron & Edward Strong
 2682 Rt. 553 Hwy, East, Penn Run, PA, 15765
 P: 724-349-2018
 - 21 Treasure Tree Nursery ■**
Charles C. Flinn
 168 Valley Rd., Indiana, PA, 15701
 P: 724-465-8502
 - 22 Willow Springs Nursery ■ ♦**
Joe Kostryk
 326 McCreight Rd., Shelocta, PA, 15774
 P: 724-726-1112
 - 23 Wilson's Nursery ■**
 251 Kimmel Rd., Home, PA, 15747
 P: 724-388-9897